

# Pontoon mock-up section comes together

Crews last week set an interior wall into a mock-up pontoon section for the state Route 520 bridge project. The test section is being constructed at Satsop Development Park in Grays Harbor County to determine which construction method will work best for the 33 pontoons that will make up the new floating bridge across Lake Washington.

When finished in mid-March, the test pontoon will measure 120 feet long, 38 feet wide and 28.5 feet tall — about one-sixth the size of the largest pontoons that the Washington State Department of Transportation will use to build the bridge. Engineers are using the mock-up to determine the best concrete placement and consolidation methods, which aggregates and admixtures to use, and how heating and cooling systems will affect concrete curing.

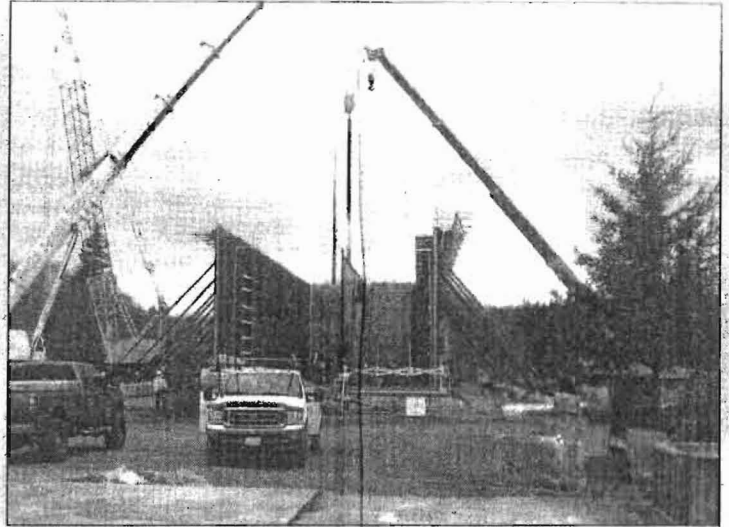


Photo courtesy of Satsop Development Park

Quigg Bros. has a \$2.8 million contract for the work, which is called Advanced Construction Methods and Engineering, or ACME.

Construction of the actual pontoons is expected to begin in early 2012. Last month, a joint venture of Kiewit-General submitted the apparent

best bid of \$367.3 million to design and build a casting facility for the 33 pontoons. Two sites are under consideration for the casting facility: one in Aberdeen and one in Hoquiam.

WSDOT wants to open the new floating bridge by late 2014.